

OIL FILTER ADAPTER

REMOVAL

- (1) Raise vehicle on hoist.
- (2) Remove the oil filter.
- (3) Remove oil cooler attaching fastener from center of oil cooler.
- (4) Reposition oil cooler.
- (5) Disconnect oil pressure switch electrical connector.
- (6) Remove oil filter adapter attaching bolt (Fig. 133).

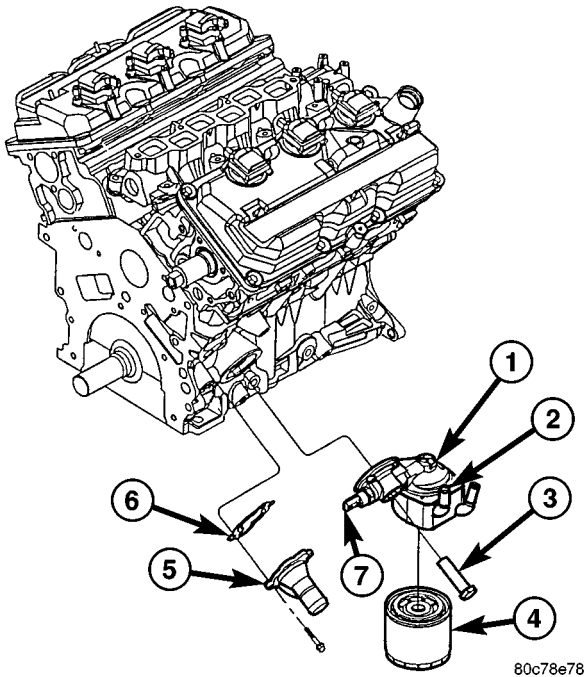


Fig. 133 Engine Oil Cooler and Filter Ad

- 1 - OIL FILTER ADAPTER
- 2 - OIL COOLER
- 3 - FASTENER-OIL FILTER ADAPTER
- 4 - OIL FILTER
- 5 - WATER INLET TUBE
- 6 - GASKET
- 7 - OIL PRESSURE SENSOR

INSTALLATION

- (1) Clean oil filter adapter sealing surfaces and install new seal.
- (2) Position adapter on engine block and install attaching bolt (Fig. 134). Tighten bolt to 40 N·m (30 lbs. ft.).
- (3) Connect oil pressure switch electrical connector.
- (4) Install oil cooler.
- (5) Install the oil filter.
- (6) Lower vehicle on hoist.
- (7) Start engine and allow to run approximately 2 minutes.

- (8) Turn off engine and check oil level. Adjust oil level as necessary.

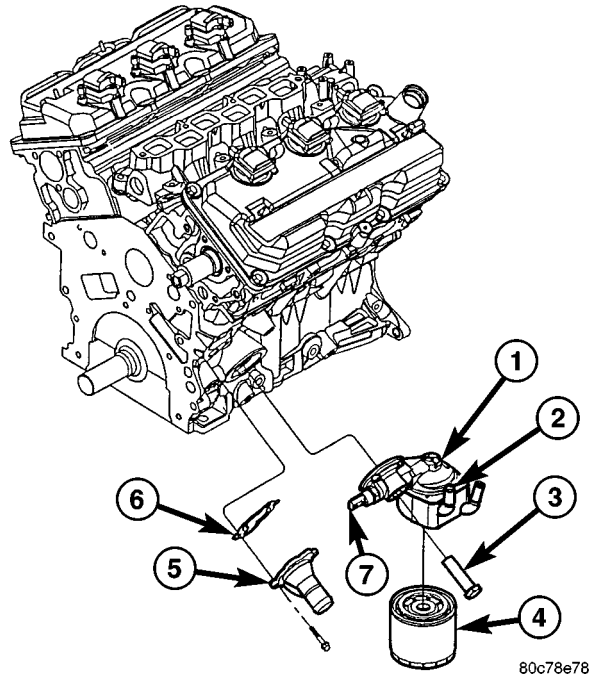


Fig. 134 Engine Oil Cooler and Filter Ad

- 1 - OIL FILTER ADAPTER
- 2 - OIL COOLER
- 3 - FASTENER-OIL FILTER ADAPTER
- 4 - OIL FILTER
- 5 - WATER INLET TUBE
- 6 - GASKET
- 7 - OIL PRESSURE SENSOR

OIL PAN

REMOVAL

- (1) Disconnect negative battery cable.
- (2) Remove radiator close out panel.
- (3) Remove radiator core support.
- (4) Remove radiator cooling fans.
- (5) Remove the engine oil indicator.

NOTE: It is not necessary to recover the refrigerant from the refrigerant system to perform this procedure.

- (6) Remove the top air conditioning compressor bolts.
- (7) Raise and support the vehicle.

NOTE: It is not necessary to recover the refrigerant from the refrigerant system to perform this procedure.

- (8) Remove the lower air conditioning compressor mounting bolts and reposition the compressor with a suitable retaining strap.

OIL PAN (Continued)

(9) Remove the air conditioning compressor bracket

(10) Remove structural collar from oil pan and transmission housing (Refer to 9 - ENGINE/ENGINE BLOCK/STRUCTURAL COVER - REMOVAL).

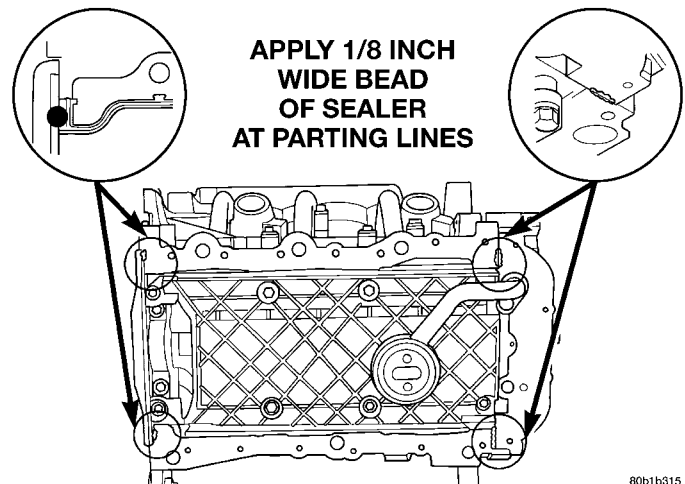
(11) Remove the inspection shield between the transmission and oil pan.

(12) Drain engine oil.

(13) Remove oil pan fasteners. Remove oil pan (Fig. 135).

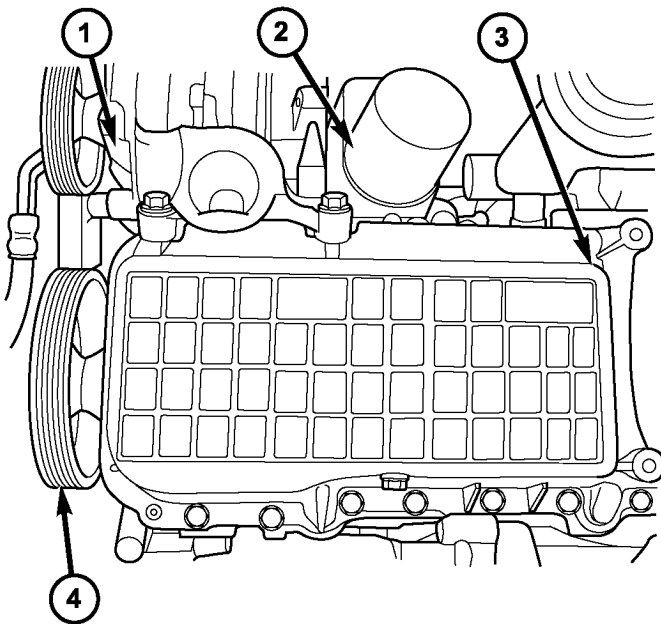
NOTE: A small amount of oil will remain in the oil pan. Use care when removing the oil pan from the engine.

(14) Remove oil pan gasket.



80b1b315

Fig. 136 OIL PAN SEALING - TYPICAL



81126e09

Fig. 135 OIL PAN

- 1 - AIR CONDITIONING COMPRESSOR
- 2 - OIL FILTER
- 3 - OIL PAN
- 4 - VIBRATION DAMPER

INSTALLATION

(1) Clean oil pan and all gasket surfaces.

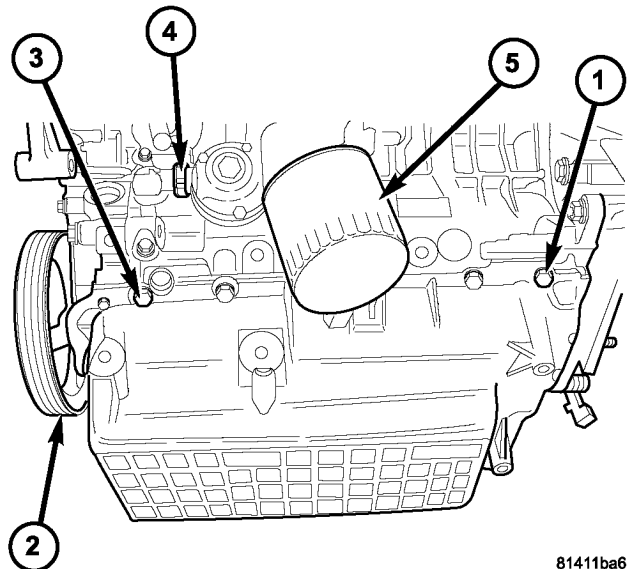
(2) Apply a 1/8 inch bead of Mopar® Engine RTV GEN II at the parting line of the oil pump housing and the rear seal retainer (Fig. 136).

(3) Install oil pan gasket to the engine block.

(4) Install pan while aligning the oil level indicator tube and attach fasteners finger tight.

(5) First tighten the M8 oil pan alignment bolt (1) to 28N.m (250 lbs. in.), then tighten alignment pan bolt (3) to 28N.m (250 lbs. in.) (Fig. 137).

(6) Tighten the remaining M8 bolts and M8 nuts to 28 N.m (250 in. lbs.) starting on the opposite side



81411ba6

Fig. 137 OIL PAN ALIGNMENT BOLTS

- 1 - M8 OIL PAN ALIGNMENT BOLT
- 2 - VIBRATION DAMPER
- 3 - M8 OIL PAN ALIGNMENT BOLT
- 4 - OIL PRESSURE SENDING UNIT
- 5 - OIL FILTER

of the oil pan, then the M6 bolts to 12 N.m (105 in. lbs.) (Fig. 137).

(7) Install inspection shield between the engine block and transmission bell housing.

(8) Install the structural collar (Refer to 9 - ENGINE/ENGINE BLOCK/STRUCTURAL COVER - INSTALLATION).

(9) Install the A/C compressor mounting bracket bolts. Tighten bolts to 54 N.m (40 ft. lbs.).

(10) Install the lower A/C compressor and mounting bolts. Tighten bolts to 28 N.m (250 in. lbs.).