

DISTRIBUTION - REAR

TABLE OF CONTENTS

	page		page
BLOWER MOTOR		5 PASSENGER SEATING	56
DESCRIPTION	53	INSTALLATION	
OPERATION	53	4 PASSENGER SEATING	56
REMOVAL	54	5 PASSENGER SEATING	56
INSTALLATION	54		
FLOOR CONSOLE DUCTS			
REMOVAL			
4 PASSENGER SEATING	55		

BLOWER MOTOR

DESCRIPTION

Vehicles equipped with 4 passenger seating and automatic temperature control (ATC) heating-A/C system, use a 12-volt, direct current (DC) rear blower motor. The rear blower motor has an integral wire harness and two squirrel cage-type blower wheels that are secured to the blower motor shaft (Fig. 1). The blower motor and wheels are contained within the two halves of the rear blower motor housing, which is located under the front center floor console cover.

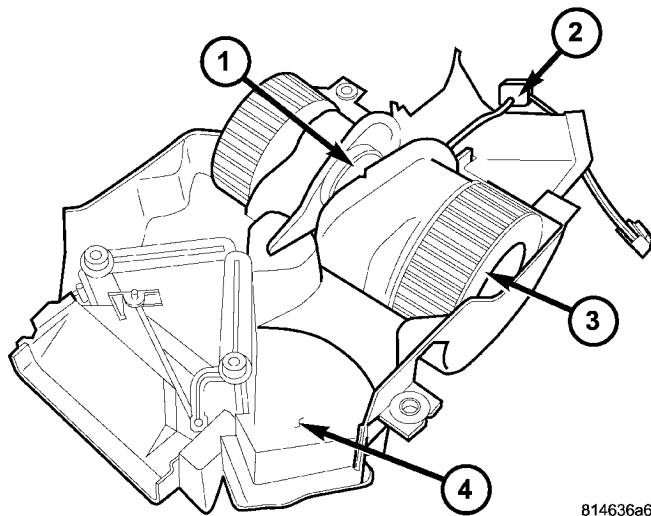


Fig. 1 Rear Blower Motor

- 1 - REAR BLOWER MOTOR
- 2 - WIRE HARNESS
- 3 - BLOWER WHEEL (2)
- 4 - LOWER REAR BLOWER MOTOR HOUSING

OPERATION

The rear blower motor and wheels are used to control the velocity of air moving through the center floor console ducts by spinning the blower wheels within the housing at the selected or programmed speed (depending on application).

The rear blower motor will operate whenever the ignition switch is in the On position and the power for the A/C-heater control of the automatic temperature control (ATC) heating-A/C system is turned on. When the ATC A/C-heater control display reads REAR AUTO or when the rear blower motor is off, the switch located in the center console between the second row seats is not functional. When the A/C-heater control display reads REAR, only the rear seat occupants control the rear blower motor speed from the rear switch. When in the Rear mode, the rear occupants can set the rear switch to any blower motor speed including OFF or AUTO. While in the Auto position, the rear blower motor speed will be automatically controlled.

The rear blower motor speed is controlled by an electronic blower motor power module, which uses a pulse width modulated input from the ATC A/C-heater control and feedback signal from the rear blower motor to regulate the blower motor ground path. The rear blower motor receives battery current whenever the rear blower motor relay is energized.

For diagnosis and testing of the rear blower motor, refer to 24 - HEATING & AIR CONDITIONING/DISTRIBUTION - FRONT/BLOWER MOTOR - DIAGNOSIS AND TESTING.

The rear blower motor and blower motor wheels are factory balanced and cannot be adjusted or repaired. If faulty or damaged, the rear blower motor and blower wheels must be replaced as an assembly.

BLOWER MOTOR (Continued)

REMOVAL

NOTE: The rear blower motor and blower wheels are serviced only as a balanced unit. If either component is faulty or damaged, the entire blower motor and wheel assembly must be replaced.

(1) Remove the front center floor console cover (Refer to 23 - BODY/INTERIOR/CENTER CONSOLE - REMOVAL).

(2) Disconnect and isolate the negative battery cable.

(3) Disconnect the body wire harness connectors from the rear blower motor power module and the rear mode door actuator (Fig. 2).

(4) Remove the body wire harness bracket from the console support bracket.

(5) Remove the eight screws and the two console support brackets from the floor console base and duct assembly

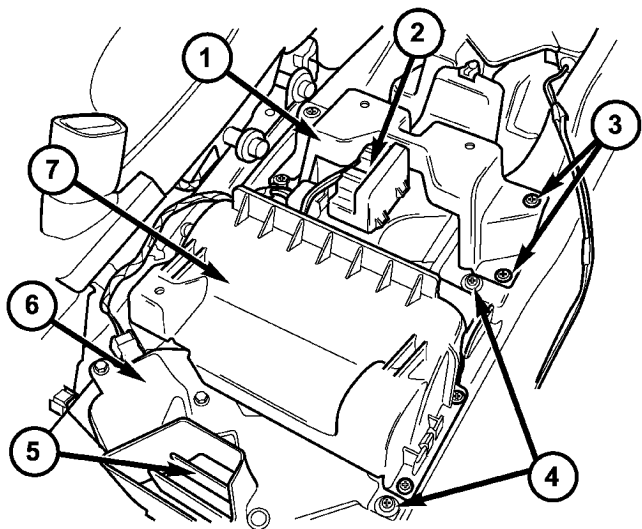


Fig. 2 Rear Blower Motor Housing

- 1 - SUPPORT BRACKET (FRONT)
- 2 - POWER MODULE
- 3 - SCREWS (8)
- 4 - SCREWS (4)
- 5 - REAR BLOWER MOTOR HOUSING
- 6 - REAR MODE DOOR ACTUATOR
- 7 - SUPPORT BRACKET (REAR)

(6) Remove the four screws that secure the rear blower motor housing to the floor console base and duct assembly.

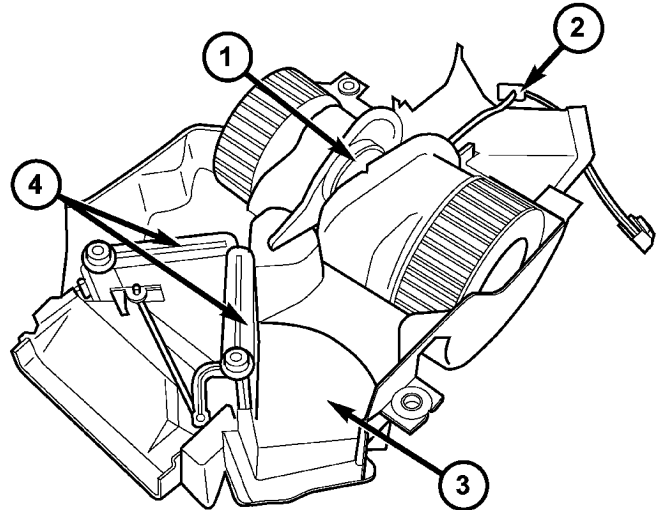
(7) Remove the rear blower motor housing and place it on a bench.

(8) Disconnect the rear blower motor wire harness connector from the power module.

(9) Remove the eleven retaining clips and three screws that secure the housing together.

(10) Carefully separate the two halves of the housing.

(11) Remove the blower motor wire harness and grommet from the housing and remove the blower motor (Fig. 3).



8110cfac

Fig. 3 Rear Blower Motor

- 1 - REAR BLOWER MOTOR
- 2 - WIRE HARNESS GROMMET
- 3 - REAR BLOWER MOTOR HOUSING
- 4 - CENTER CONSOLE MODE DOORS

INSTALLATION

(1) Position the rear blower motor into the housing and install the blower motor wire harness and grommet.

(2) Assemble the two halves of the rear blower motor housing and install the eleven retaining clips and three screws. Tighten the screws to 2 N·m (17 in. lbs.).

(3) Connect the rear blower motor wire harness connector to the rear blower motor power module.

(4) Position the rear blower motor housing into the floor console.

(5) Install the four screws that secure the rear blower motor housing to the floor console base. Tighten the screws to 2 N·m (17 in. lbs.).

(6) Position the two console support brackets onto the floor console base.

(7) Install the eight screws that secure the support brackets to the floor console base. Tighten the screws to 2 N·m (17 in. lbs.).

(8) Install the body wire harness bracket onto the console rear support bracket.

(9) Connect the body wire harness connectors to the rear blower motor power module and the rear mode door actuator.

(10) Reconnect the negative battery cable.

BLOWER MOTOR (Continued)

(11) Install the front center floor console (Refer to 23 - BODY/INTERIOR/CENTER CONSOLE - INSTALLATION).

(12) Calibrate the A/C-heater control (Refer to 24 - HEATING & AIR CONDITIONING/CONTROLS - FRONT/A/C HEATER CONTROL - STANDARD PROCEDURE -A/C-HEATER CONTROL CALIBRATION).

(3) Disconnect the body wire harness connectors from the rear blower motor power module, floor console mode door actuator and the hands-free module (Fig. 4).

(4) Remove the body wire harness bracket from the console support bracket.

(5) Remove the gear shift assembly (Refer to 21 - TRANSMISSION/TRANSAXLE/AUTOMATIC - 41TE/SHIFT MECHANISM - REMOVAL).

(6) If necessary, remove the two support brackets, the rear blower motor housing and the hands-free module from the floor console base and duct assembly.

(7) Remove the nine nuts and two bolts that secure the floor console base and duct assembly to the center floor panel and remove the base and duct assembly.

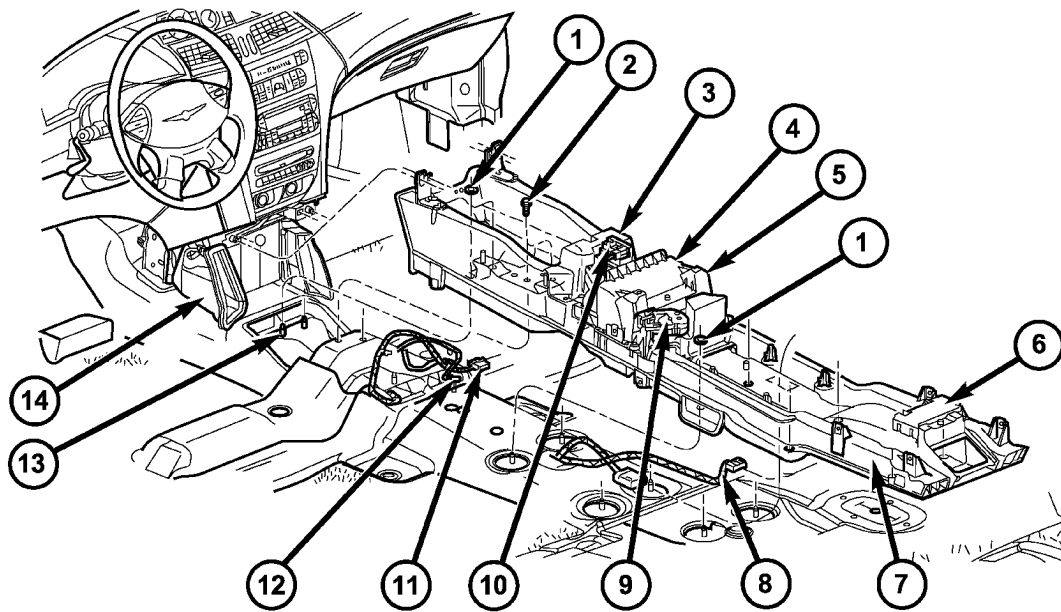
FLOOR CONSOLE DUCTS

REMOVAL

4 PASSENGER SEATING

(1) Remove the front and rear center floor console covers (Refer to 23 - BODY/INTERIOR/CENTER CONSOLE - REMOVAL).

(2) Disconnect and isolate the negative battery cable.



8110c377

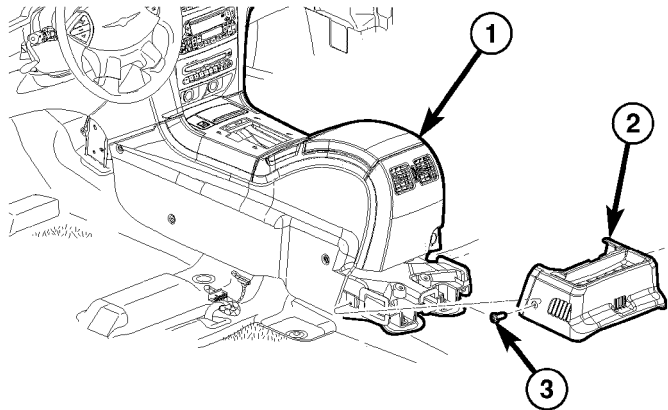
Fig. 4 Floor Console Base and Duct Assembly

- | | |
|--|--|
| 1 - NUT (9) | 8 - HANDS-FREE MODULE WIRE CONNECTOR |
| 2 - BOLT (2) | 9 - MODE DOOR ACTUATOR |
| 3 - SUPPORT BRACKET (FRONT) | 10 - POWER MODULE |
| 4 - REAR BLOWER MOTOR HOUSING | 11 - POWER MODULE WIRE CONNECTOR |
| 5 - SUPPORT BRACKET (REAR) | 12 - MODE DOOR ACTUATOR WIRE CONNECTOR |
| 6 - HANDS-FREE MODULE | 13 - WELD STUD (9) |
| 7 - FLOOR CONSOLE BASE AND DUCT ASSEMBLY | 14 - FLOOR DISTRIBUTION DUCT |

FLOOR CONSOLE DUCTS (Continued)

5 PASSENGER SEATING

(1) Remove the two screws that secure the rear floor outlet assembly to the rear of the center floor console and remove the floor outlet assembly (Fig. 5).



81466e46

Fig. 5 Rear Floor Outlet Assembly

- 1 - CENTER FLOOR CONSOLE
- 2 - REAR FLOOR OUTLET ASSEMBLY
- 3 - SCREW (2)

(2) Remove the center floor console cover (Refer to 23 - BODY/INTERIOR/CENTER CONSOLE - REMOVAL).

(3) Remove the gear shift assembly (Refer to 21 - TRANSMISSION/TRANSAXLE/AUTOMATIC - 41TE/SHIFT MECHANISM - REMOVAL).

(4) Remove the five nuts and two bolts that secure the floor console base and duct assembly to the floor panel and remove the base and duct assembly (Fig. 6).

INSTALLATION

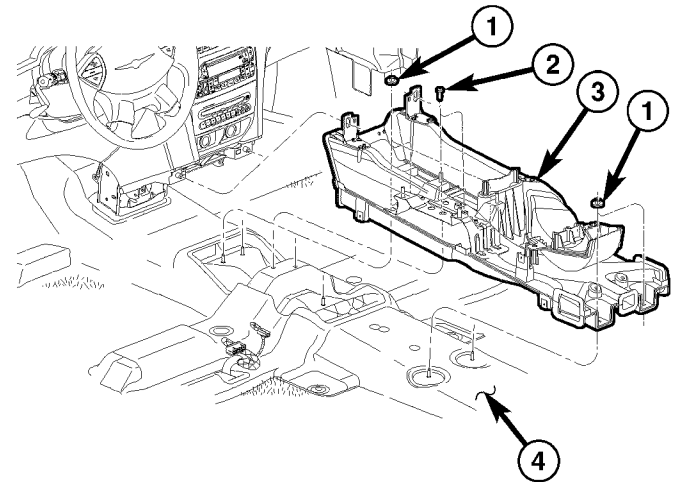
4 PASSENGER SEATING

(1) Position the floor console base and duct assembly into the vehicle.

(2) Install the nine nuts and two bolts that secure the floor console base and duct assembly to the center floor panel. Tighten the nuts and bolts to 5 N·m (45 in. lbs.).

(3) If removed, install the two support brackets, the rear blower motor housing and the hands-free module. Tighten the screws to 2 N·m (17 in. lbs.).

(4) Install the gear shift assembly (Refer to 21 - TRANSMISSION/TRANSAXLE/AUTOMATIC - 41TE/SHIFT MECHANISM - INSTALLATION).



81466e44

Fig. 6 Floor Console Base and Duct Assembly

- 1 - NUT (5)
- 2 - BOLT (2)
- 3 - BASE AND DUCT ASSEMBLY
- 4 - CENTER FLOOR PANEL

(5) Install the body wire harness bracket onto the console support bracket.

(6) Connect the body wire harness connectors to the rear blower motor power module, floor console mode door actuator and the hands-free module.

(7) Reconnect the negative battery cable.

(8) Install the front and rear center floor console covers (Refer to 23 - BODY/INTERIOR/CENTER CONSOLE - INSTALLATION).

5 PASSENGER SEATING

(1) Position the floor console base and duct assembly into the vehicle.

(2) Install the five nuts and two bolts that secure the floor console base and duct assembly to the center floor panel. Tighten the nuts and bolts to 5 N·m (45 in. lbs.).

(3) Install the gear shift assembly (Refer to 21 - TRANSMISSION/TRANSAXLE/AUTOMATIC - 41TE/SHIFT MECHANISM - INSTALLATION).

(4) Install the center floor console cover (Refer to 23 - BODY/INTERIOR/CENTER CONSOLE - INSTALLATION).

(5) Install the rear floor outlet assembly onto the rear of the center floor console.

(6) Install the two screws that secure the rear floor outlet assembly to the center floor console. Tighten the screws to 2 N·m (17 in. lbs.).